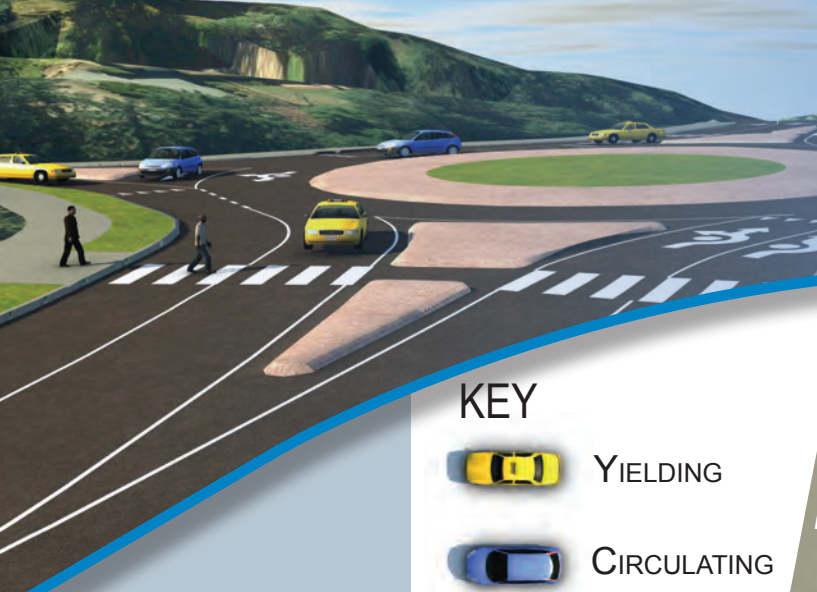


HOW TO DRIVE THROUGH THE

RUTHERFORD ROUNDBABOUT



KEY



YIELDING



CIRCULATING



YIELD

THE "GOLDEN RULE" OF ROUNDABOUTS

DRIVERS IN THE ROUNDABOUT HAVE THE RIGHT OF WAY. DRIVERS APPROACHING THE ROUNDABOUT MUST YIELD TO PEDESTRIANS, CYCLISTS, AND CIRCULATING VEHICLES, AND WAIT FOR A SAFE GAP IN TRAFFIC BEFORE ENTERING.



DRIVERS ENTER ONLY WHEN THERE IS A SAFE GAP IN TRAFFIC.

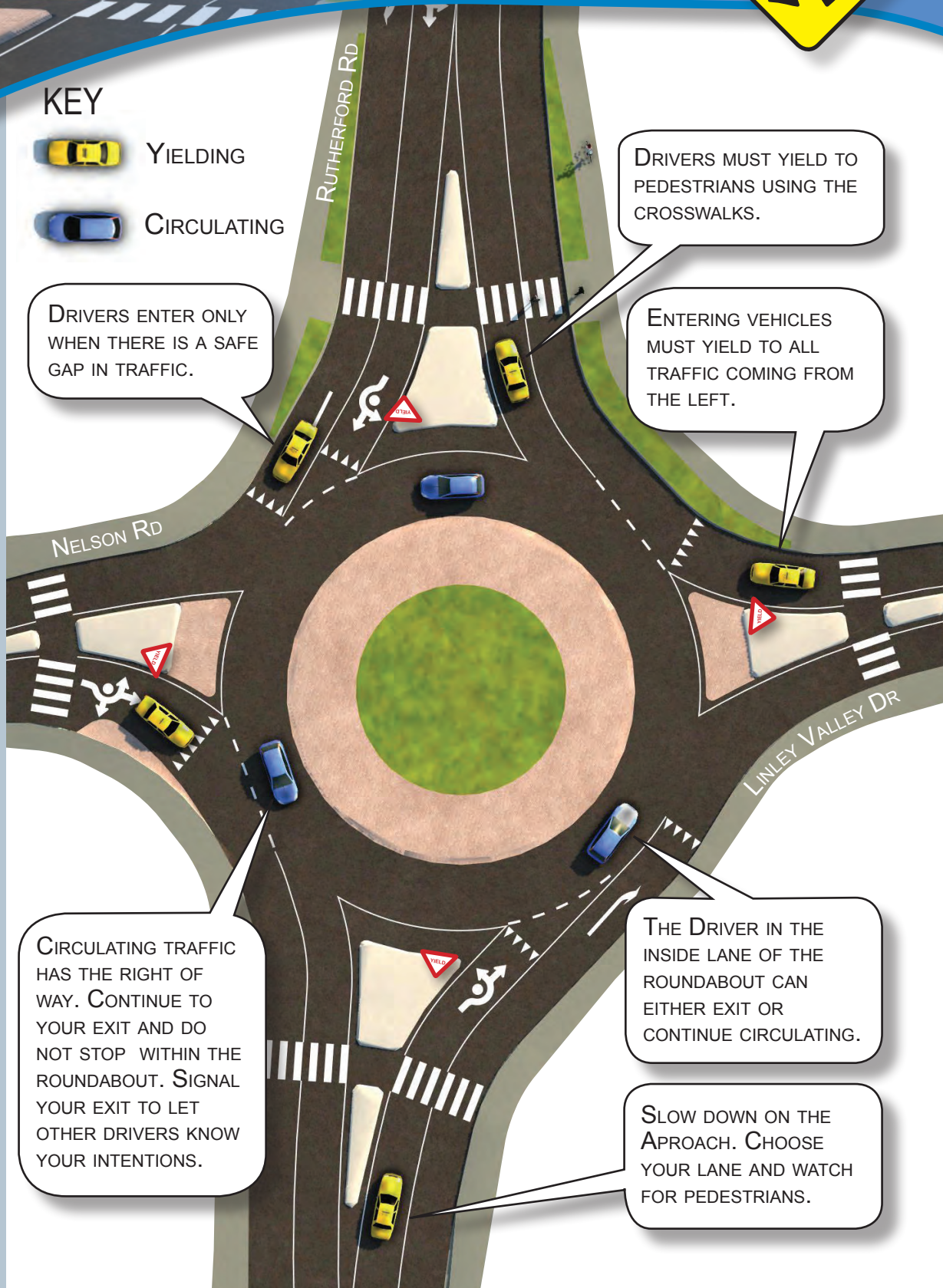
DRIVERS MUST YIELD TO PEDESTRIANS USING THE CROSSWALKS.

ENTERING VEHICLES MUST YIELD TO ALL TRAFFIC COMING FROM THE LEFT.

CIRCULATING TRAFFIC HAS THE RIGHT OF WAY. CONTINUE TO YOUR EXIT AND DO NOT STOP WITHIN THE ROUNDABOUT. SIGNAL YOUR EXIT TO LET OTHER DRIVERS KNOW YOUR INTENTIONS.

THE DRIVER IN THE INSIDE LANE OF THE ROUNDABOUT CAN EITHER EXIT OR CONTINUE CIRCULATING.

SLOW DOWN ON THE APPROACH. CHOOSE YOUR LANE AND WATCH FOR PEDESTRIANS.



FOR MORE INFORMATION PLEASE VISIT:

[HTTP://WWW.NANAIMO.CA/GOTO/ROUNDBABOUTS](http://www.nanaimo.ca/goto/roundabouts)

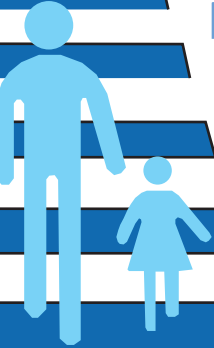
CITY OF NANAIMO
THE HARBOUR CITY



RUTHERFORD ROUNDBABOUT



FOR CYCLISTS AND PEDESTRIANS



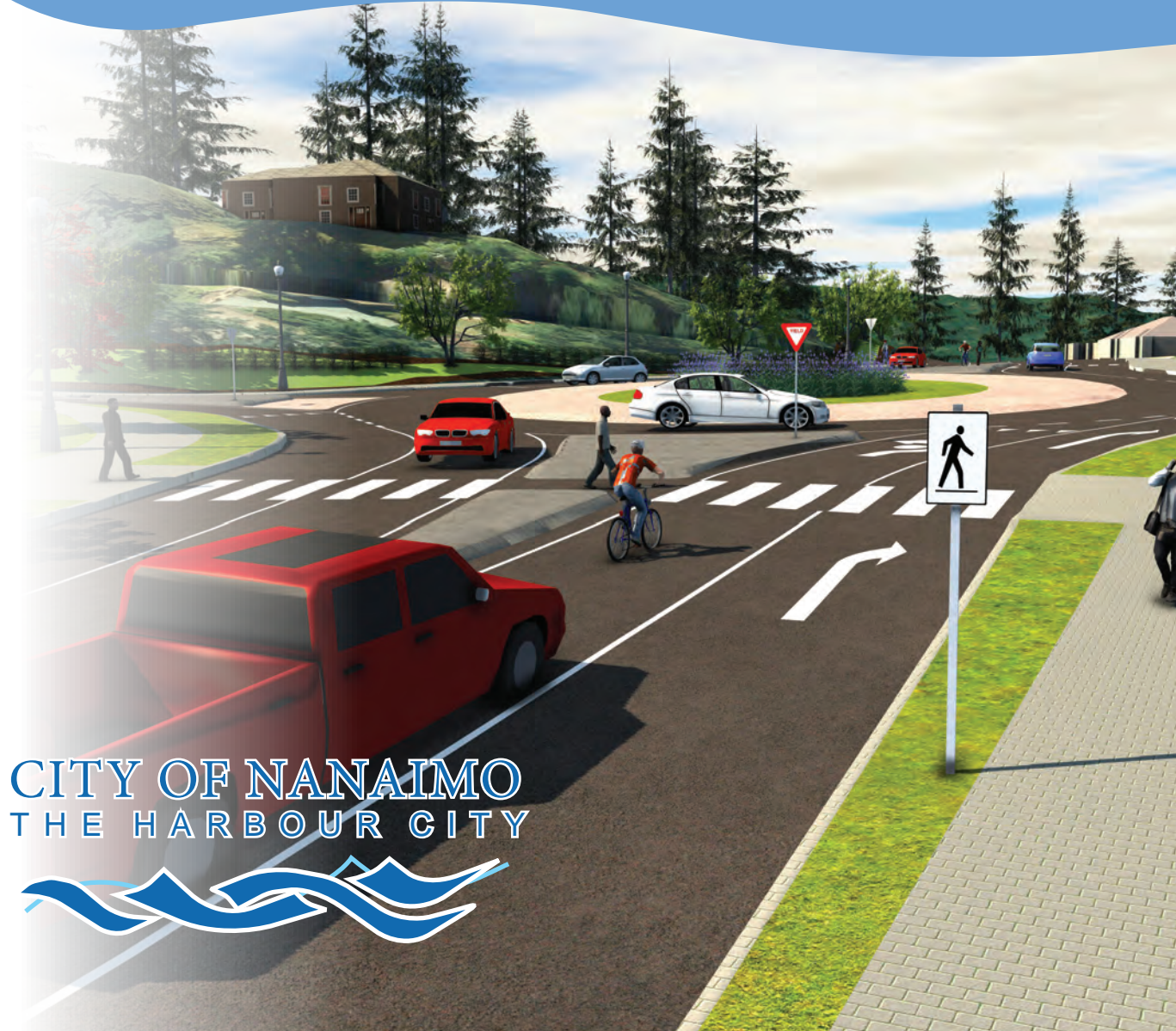
STOP

LOOK

LISTEN

BE SEEN

THE CROSSWALKS AT THE NEW ROUNDBABOUT ARE NOT CONTROLLED, MEANING THERE IS NO STOP SIGN OR TRAFFIC SIGNALS WARNING VEHICLES TO STOP FOR PEDESTRIANS. ALWAYS MAKE EYE CONTACT WITH DRIVERS BEFORE PROCEEDING THROUGH A DESIGNATED CROSSWALK.



CITY OF NANAIMO
THE HARBOUR CITY





THE SHARED PATH
 ALLOWS CROSSING OF THE
 RUTHERFORD ROAD CORRIDOR FROM
 LINLEY VALLEY WEST, AWAY FROM THE
 NEW ROUNDABOUT INTERSECTION.



**THE WIDE 3M SHARED
 PATH CAN BE USED BY BOTH
 PEDESTRIANS AND CYCLISTS.**



**CYCLISTS MUST DISMOUNT
 AND WALK THEIR BIKE
 THROUGH ANY CROSSWALKS.**



**PEDESTRIANS SHOULD
 LOOK AND WAIT FOR ANY
 APPROACHING VEHICLES TO
 STOP. MAKE EYE CONTACT
 WITH THE DRIVER. CROSS
 TOGETHER OR IN GROUPS
 TO BE MORE VISIBLE.**



**CYCLISTS CAN CHOOSE TO
 BIKE ALONG THE SHARED
 PATHWAY.**



**PEDESTRIANS SHOULD USE THE
 SPLITTER ISLANDS BETWEEN EACH
 CROSSWALK. THESE PROVIDE A
 REFUGE BETWEEN THE INBOUND AND
 OUTBOUND TRAFFIC.**



**CYCLISTS CAN ALSO STAY IN THE
 VEHICLE LANE AND NAVIGATE THE
 ROUNDABOUT AS A MOTORIST. YIELD
 TO TRAFFIC ON THE ROUNDABOUT,
 ENTERING WHEN IT'S SAFE TO DO SO.
 TAKE YOUR LANE.**

