

The 2020 – 2024 Financial Plan has been approved and the property tax rate has been set for 2020. Property taxes increased 4.5% with 1% going toward the General Asset Management Reserve and 3.5% for the General Property Tax increase. You will receive your tax notice either by mail or email by the end of May.

Updated annually, the City’s five-year financial plan includes budgeted revenues and expenditures to deliver day-to-day services to the community, deliver strategic initiatives, invest in infrastructure and enable long-term funding strategies for future infrastructure requirements.

The City collects taxes and user fees to provide a number of services to residents of Nanaimo including police and fire protection, solid waste collection, management of roads, drainage, sanitary sewer, waterworks and parks infrastructure, along with the delivery of recreation and cultural services.

The City also acts as a regulatory body with respect to business licensing, building permits and inspection, land use, development planning and subdivision approval services.

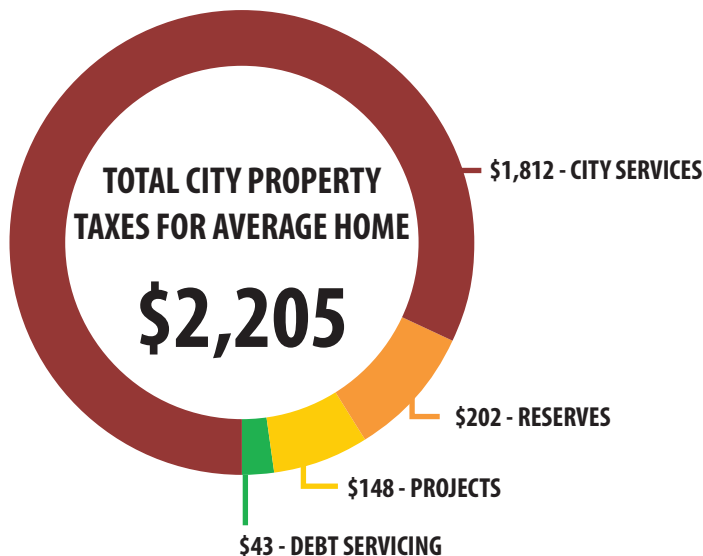
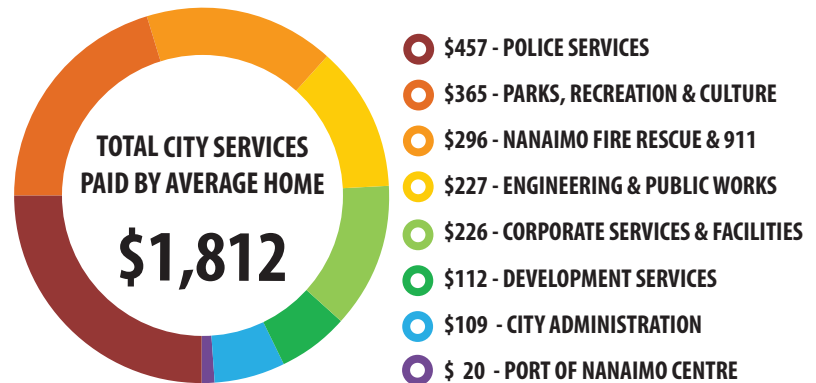
Other services such as schools, library and sewer treatment are provided through a number of boards and partnerships with other governments. These agencies levy their own taxes and fees which the City then collects on their behalf.

TAX PAID BY AVERAGE HOME	2019	2020	\$ Change	% Change
Assessment - Average Home	\$518,384	\$527,145	\$8,761	1.7%
Property Taxes	\$2,110	\$2,205	\$95	4.5%
Municipal User Fees				
Water Fees	\$552	\$594	\$42	7.5%
Sewer Fees	\$135	\$141	\$6	4.0%
Sanitation Fees	\$170	\$171	\$1	0.6%
Total Municipal Taxes & User Fees	\$2,967	\$3,111	\$144	4.8%
Other Governments				
V.I. Regional Library	\$94	\$95	\$1	0.8%
Regional District	\$436	\$473	\$37	8.7%
Regional Hospital District	\$84	\$85	\$1	0.8%
School District	\$833	\$870	\$37	4.4%
BC Assessment & MFA	\$20	\$23	\$3	11.3%
Total Other Governments	\$1,467	\$1,546	\$79	5.4%
Total Tax Levy & User Fees All	\$4,434	\$4,657	\$223	5.0%

**rounded to nearest dollar*

4.5% increase = \$95 increase for 2020 or an additional \$7.92/month for the City portion of your tax bill*

**Based on an average single family residential home*



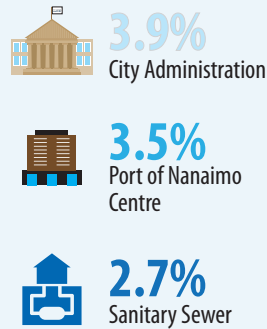
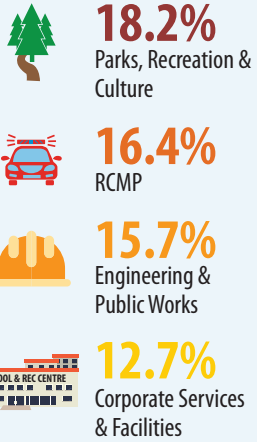
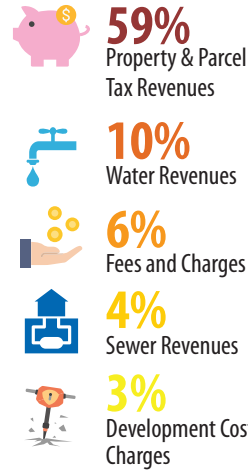
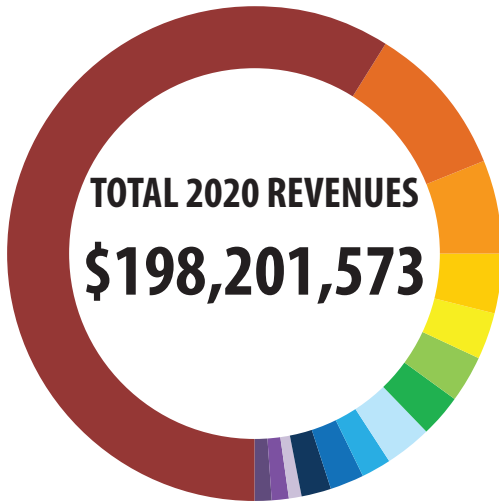
The City understands 2020 has been a year of uncertainty due to the COVID-19 pandemic. Property tax payments are due on July 2, 2020, however, to ease some financial pressure, the penalty date for late payments has been extended to October 1, 2020.

You are encouraged to pay your property taxes on time. The City still needs to operate and provide critical services to the community. Services such as 911 dispatch, police and fire to keep our community safe; having paved roads, bike lanes and sidewalks to get you to work and parks and trails to recreate in.

As well, paying your taxes on time ensures the City has sufficient cash flow to pay the many businesses we rely on for day-to-day operations such as suppliers and contractors, pay the other government bodies and agencies their share of the taxes and make payroll for City staff.

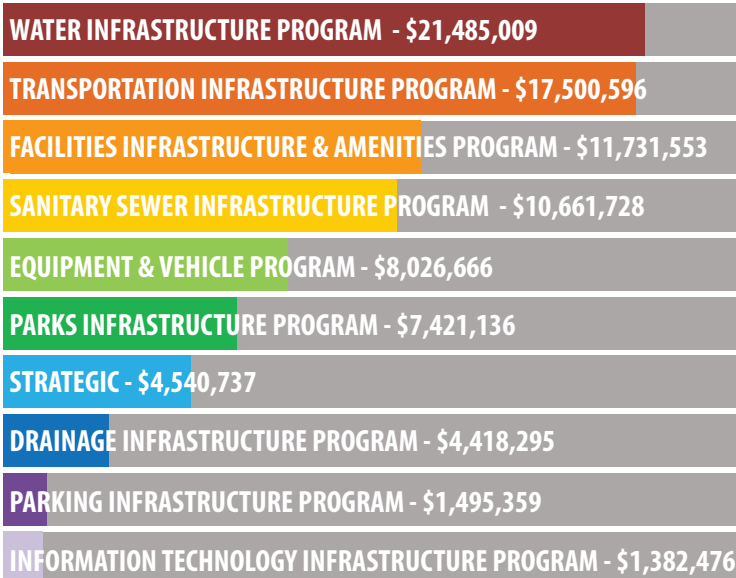


2020 REVENUES



CITY OPERATIONS

CITY PROJECTS



TOTAL 2020 PROJECT EXPENDITURES
\$88,663,554

2020 PROJECT HIGHLIGHTS

- Metral Drive Complete Street Phase 1
- Continuation of multi-year project to replace Fire Station #1
- LED outfield lights at Serauxmen Stadium
- Replacement of 2 Fire Apparatus