

The 2021 – 2025 Financial Plan has been approved and the property rate has been set for 2021. The 2021 property tax increase consists of a 2% general property tax increase and a 1% increase for the General Asset Management Reserve. You will receive your tax notice either by mail or email by the end of May.

**3% increase = \$68 increase for 2021 or an additional \$5.67/month for the City portion of your tax bill\***

*\*Based on an average single family residential home*

Updated annually, the City's five-year financial plan includes budgeted revenues and expenditures to deliver day-to-day services to the community, deliver strategic initiatives, invest in infrastructure and enable long-term funding strategies for future infrastructure requirements.

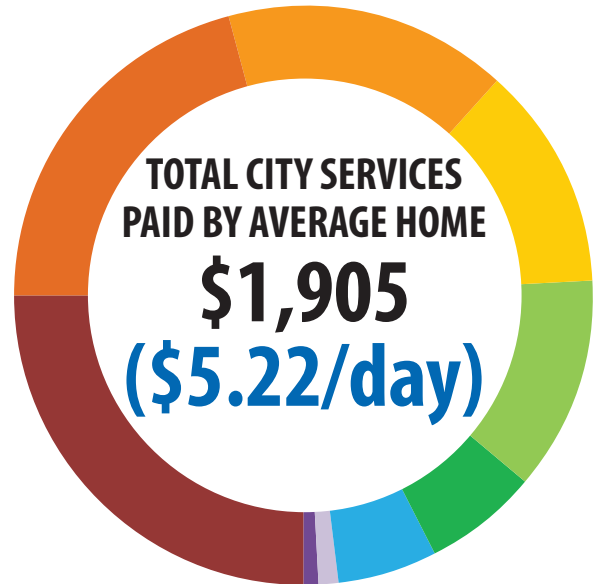
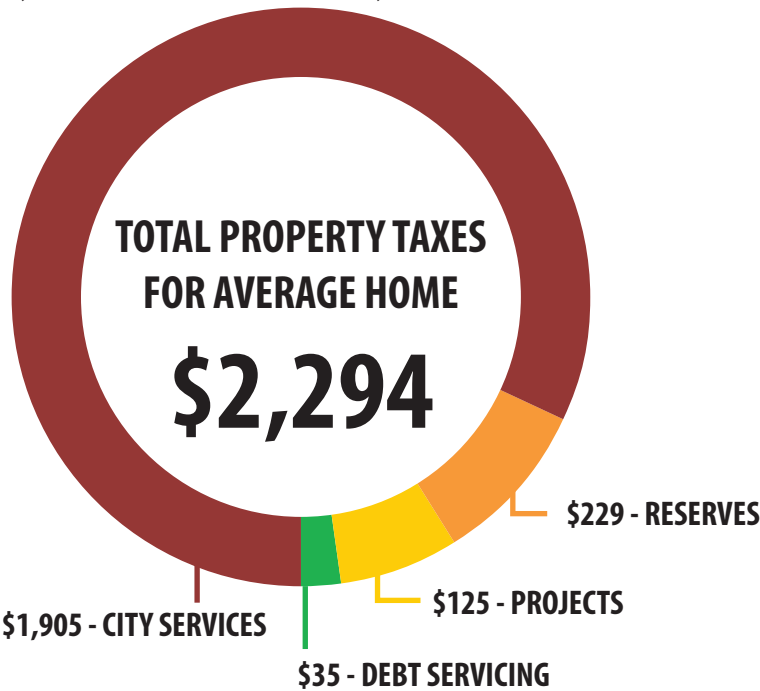
The City collects taxes and user fees to provide a number of services to residents of Nanaimo including police and fire protection, solid waste collection, management of roads, drainage, sanitary sewer, waterworks and parks infrastructure, along with the delivery of recreation and cultural services.

The City also acts as a regulatory body with respect to business licensing, building permits and inspection, land use, development planning and subdivision approval services.

Services such as schools, library and sewer treatment are provided through other boards and partnerships with other governments. These other agencies levy their own taxes and fees which the City then collects on their behalf.

TAX PAID BY AVERAGE HOME	2020	2021	\$ Change	% Change
<b>Assessment - Average Home</b>	<b>\$532,355</b>	<b>\$544,227</b>	<b>\$11,872</b>	<b>2.2%</b>
Property Taxes	\$2,226	\$2,294	\$68	3.0%
Municipal User Fees				
Water Fees	\$594	\$638	\$44	7.5%
Sewer Fees	\$141	\$146	\$5	4.0%
Sanitation Fees	\$171	\$189	\$18	10.5%
<b>Total Municipal Taxes &amp; User Fees</b>	<b>\$3,132</b>	<b>\$3,267</b>	<b>\$135</b>	<b>4.3%</b>
Other Governments				
V.I. Regional Library	\$96	\$96	\$0	0.0%
Regional District	\$478	\$505	\$27	5.5%
Regional Hospital District	\$86	\$115	\$29	34.2%
School District	\$879	\$872	-\$7	-0.8%
BC Assessment & MFA	\$23	\$22	-\$1	-1.4%
<b>Total Other Governments</b>	<b>\$1,562</b>	<b>\$1,610</b>	<b>\$48</b>	<b>3.1%</b>
<b>Total Tax Levy &amp; User Fees All</b>	<b>\$4,694</b>	<b>\$4,877</b>	<b>\$183</b>	<b>3.9%</b>

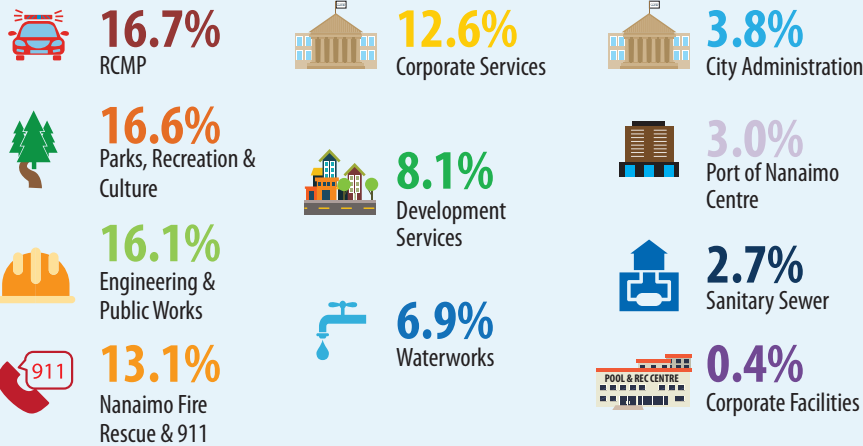
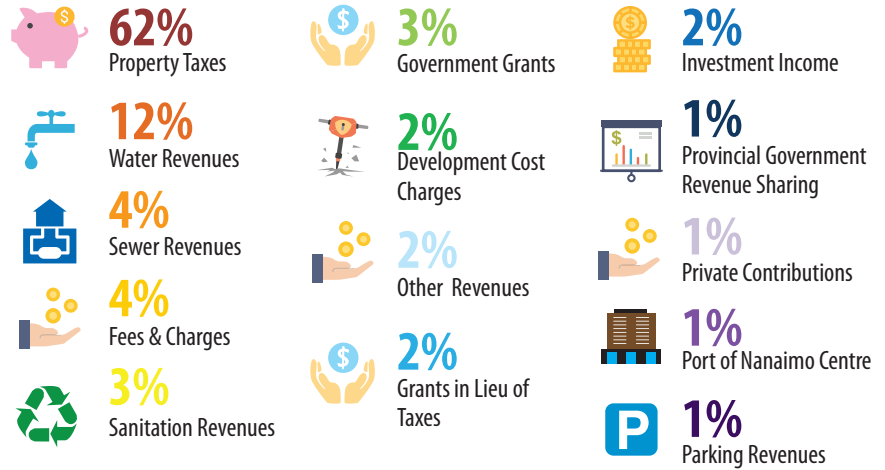
*\*rounded to nearest dollar*



- \$477 (\$1.31/day) - RCMP
- \$400 (\$1.09/day) - PARKS, RECREATION & CULTURE
- \$299 (\$0.82/day) - NANAIMO FIRE RESCUE & 911
- \$234 (\$0.64/day) - CORPORATE SERVICES
- \$226 (\$0.62/day) - ENGINEERING & PUBLIC WORKS
- \$128 (\$0.35/day) - DEVELOPMENT SERVICES
- \$109 (\$0.30/day) - CITY ADMINISTRATION
- \$21 (\$0.06/day) - PORT OF NANAIMO CENTRE
- \$11 (\$0.03/day) - CORPORATE FACILITIES

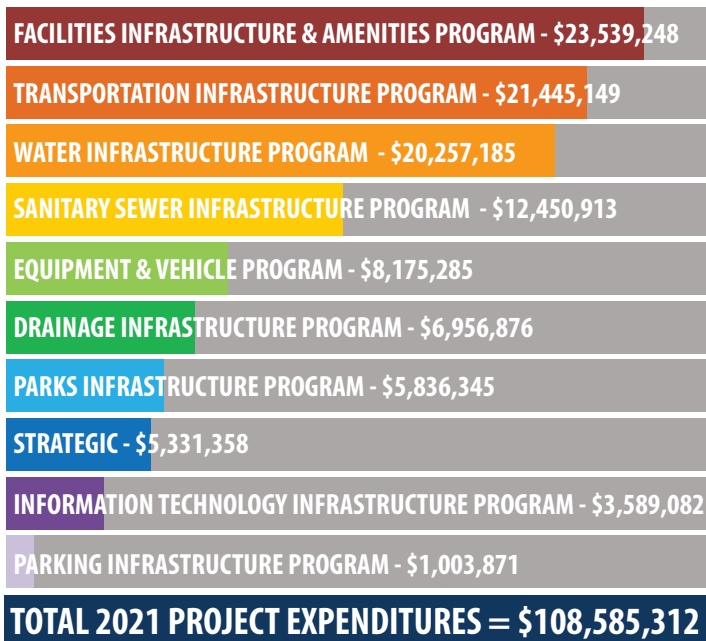


# 2021 REVENUES



# CITY OPERATIONS

# CITY PROJECTS



- ### 2021 PROJECT HIGHLIGHTS
- Metral Drive Complete Streets Phase 2
  - Beban Park Complex Electrical Substation Upgrade
  - Fourth Street – Harewood to Pine Cycling
  - Continuation of multi-year project to replace Fire Station #1
  - Neck Point Park Washrooms
  - Serauxmen Stadium Fencing