

The 2022 – 2026 Provisional Financial Plan has passed first three readings and will go for adoption by Council on December 20, 2021.

The 2022 Provisional Budget consists of a 4.9% general increase and a 1.0% increase for the General Asset Management Reserve. Council will have opportunities to review and amend the 2022 – 2026 Financial Plan prior to final adoption which is required by May 15, 2022.

Updated annually, the City's five-year financial plan includes budgeted revenues and expenditures to deliver day-to-day services to the community, deliver strategic initiatives, invest in infrastructure and enable long-term funding strategies for future infrastructure requirements.

The City collects taxes and user fees to provide a number of services to residents of Nanaimo including police and fire protection, solid waste collection, management of roads, drainage, sanitary sewer, waterworks and parks infrastructure, along with the delivery of recreation and cultural services.

The City also acts as a regulatory body with respect to business licensing, building permits and inspection, land use, development planning and subdivision approval services.

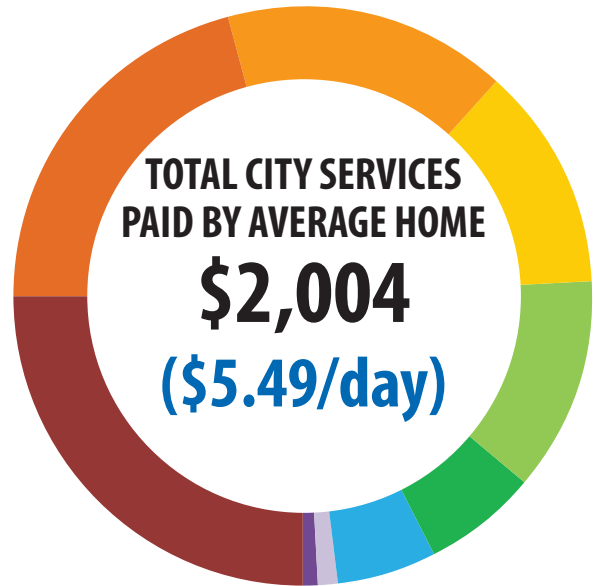
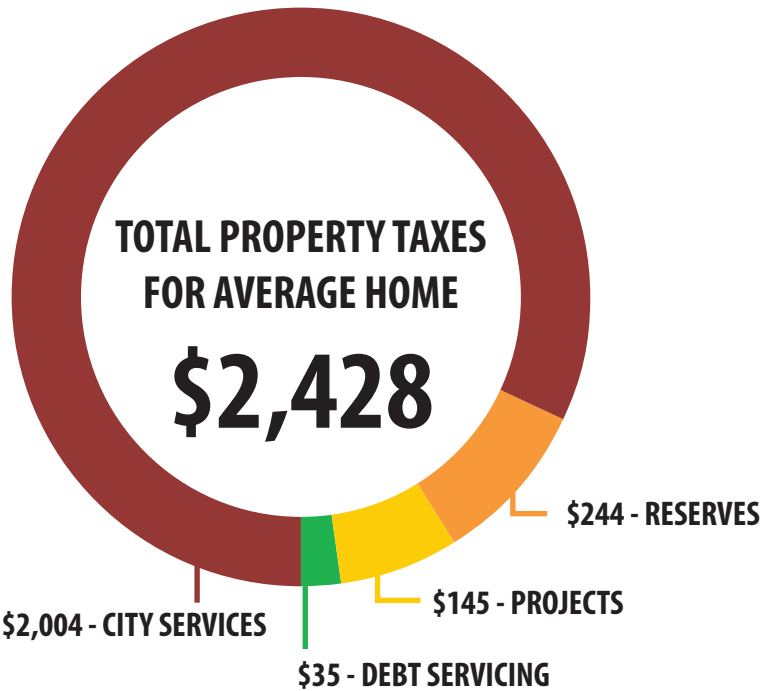
Services such as schools, library and sewer treatment are provided through other boards and partnerships with other governments. These other agencies levy their own taxes and fees which the City then collects on their behalf.

TAX PAID BY AVERAGE HOME				
Based on average home of \$544,227	2021	2022	\$ Change	% Change
Property Taxes	\$2,294	\$2,428	\$134	5.9%
Municipal User Fees				
Water Fees	\$638	\$670	\$32	5.0%
Sewer Fees	\$146	\$152	\$6	4.0%
Sanitation Fees	\$189	\$216	\$27	14.3%
Total Municipal Taxes & User Fees	\$3,267	\$3,466	\$199	6.1%

Assumes a typical single family house with average assessment change.
Rounded to the nearest dollar.

**5.9% increase = \$134 increase for 2022
or an additional \$11.17/month
for the City portion of your tax bill***

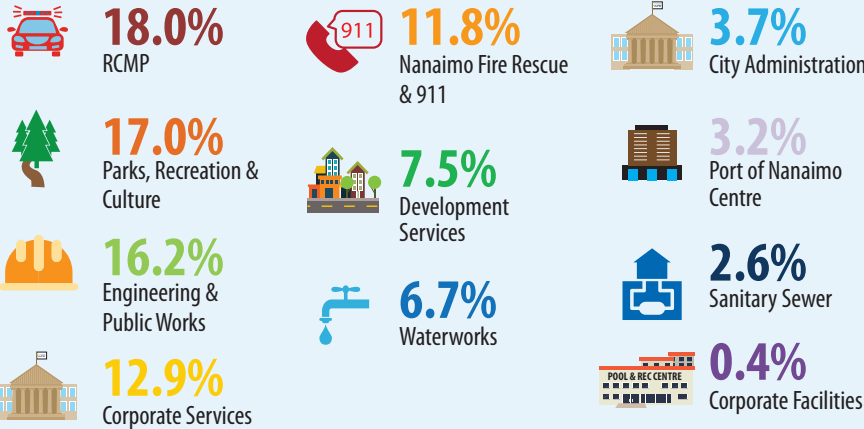
**Based on an average single family residential home*



- \$547 (\$1.50/day) - RCMP
- \$391 (\$1.07/day) - PARKS, RECREATION & CULTURE
- \$293 (\$0.80/day) - NANAIMO FIRE RESCUE & 911
- \$264 (\$0.72/day) - CORPORATE SERVICES
- \$243 (\$0.67/day) - ENGINEERING & PUBLIC WORKS
- \$125 (\$0.34/day) - DEVELOPMENT SERVICES
- \$110 (\$0.30/day) - CITY ADMINISTRATION
- \$20 (\$0.06/day) - PORT OF NANAIMO CENTRE
- \$11 (\$0.03/day) - CORPORATE FACILITIES

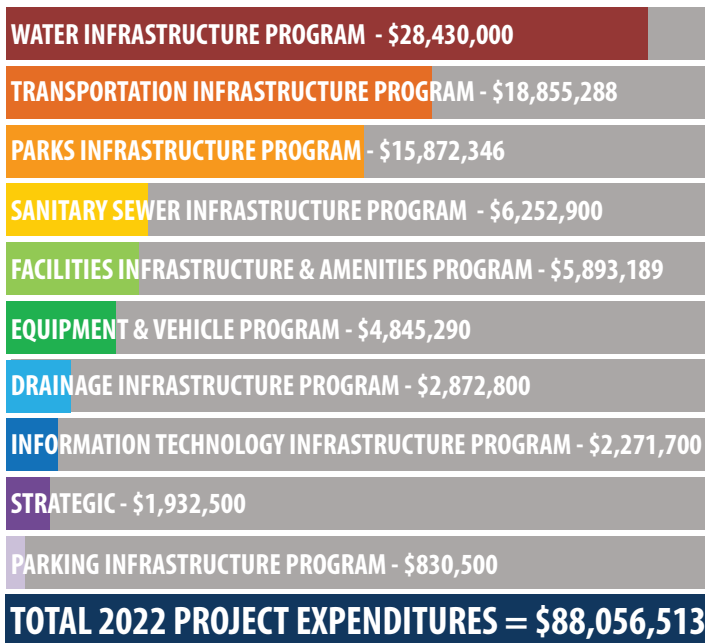


2022 REVENUES



CITY OPERATIONS

CITY PROJECTS



2022 PROJECT HIGHLIGHTS

- Completion of Fire Station #1
- Marie Davidson BMX Track Improvements
- Maffeo Sutton Playground Phase 2
- Mid-Town Water Supply Project
- Terminal Ave Complete Street – Commercial to Stewart
- Mid-Town Gateway Project